

EASY ASSEMBLY AND OPERATION INSTRUCTIONS

MR-124449 See Sawing Dolls



Please follow the step by step guide and enjoy your See Sawing Dolls!

CARE AND STORAGE INSTRUCTIONS

For best performance operate your item indoors. When not in use, store this product in its original packing. Keep away from heat and moisture.

WARNING

This item is not a toy and should be used for decoration only. This item contains small parts that can be a choking hazard. Keep all plastic and wire parts away from children.

1. Please use the transformer supplied by manufacturer.
2. Please assemble item according to instructions. Connect all wires according to matching color.
3. Children should be supervised by adults. Item should not be grabbed, as it becomes a tipping hazard. Keep all away from the transformer, as it heats up during operation.

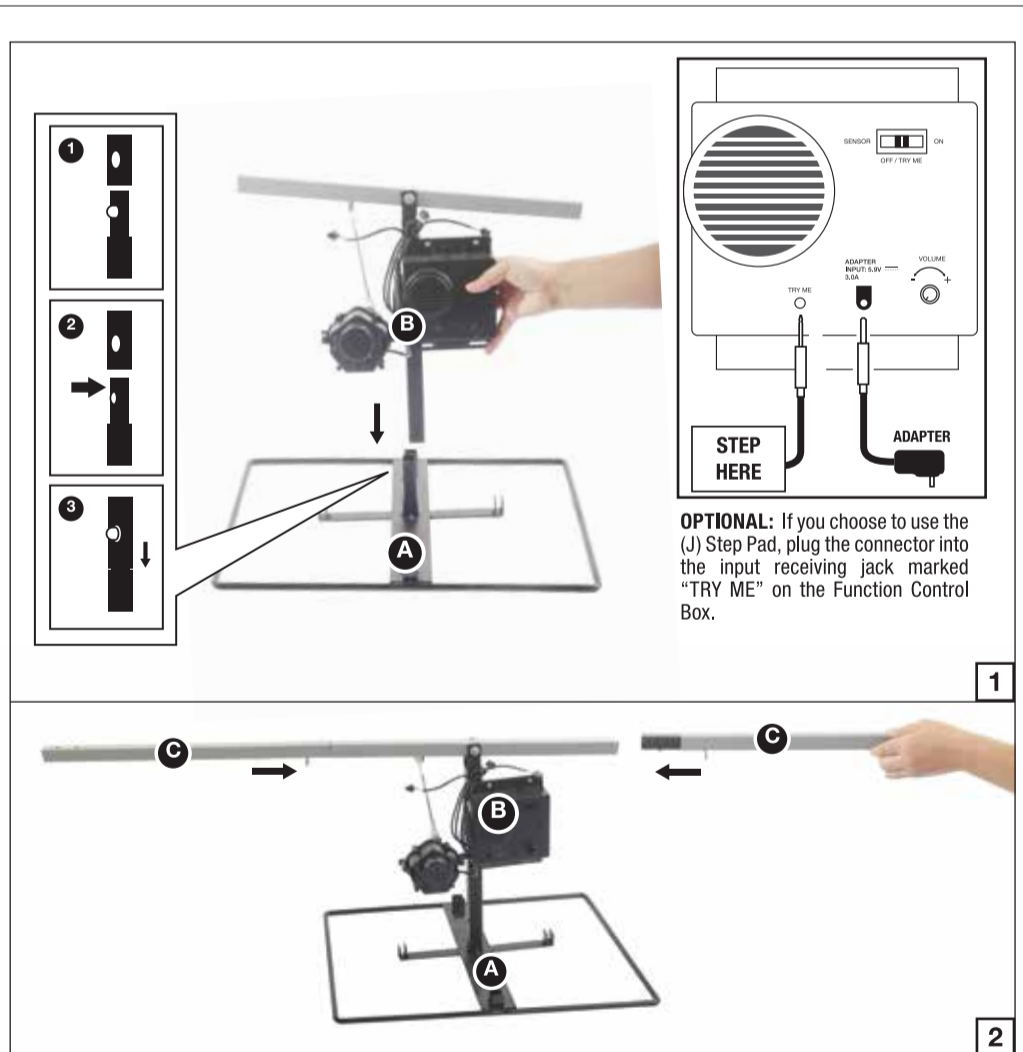
Please read all instructions carefully before assembling. Save this instruction sheet for future reference.

PARTS LIST

- A. Base
 - B. Torso Frame
 - C. Support Poles x 2
 - D. Girl
 - E. Boy
 - F. Hat
 - G. Sensor
 - H. Sign
 - I. Fabric Cover
 - J. Step Pad
 - K. Universal Adapter (Included)
- Input: 100 - 240VAC 50/60Hz
Output: 5.9V 3.0A



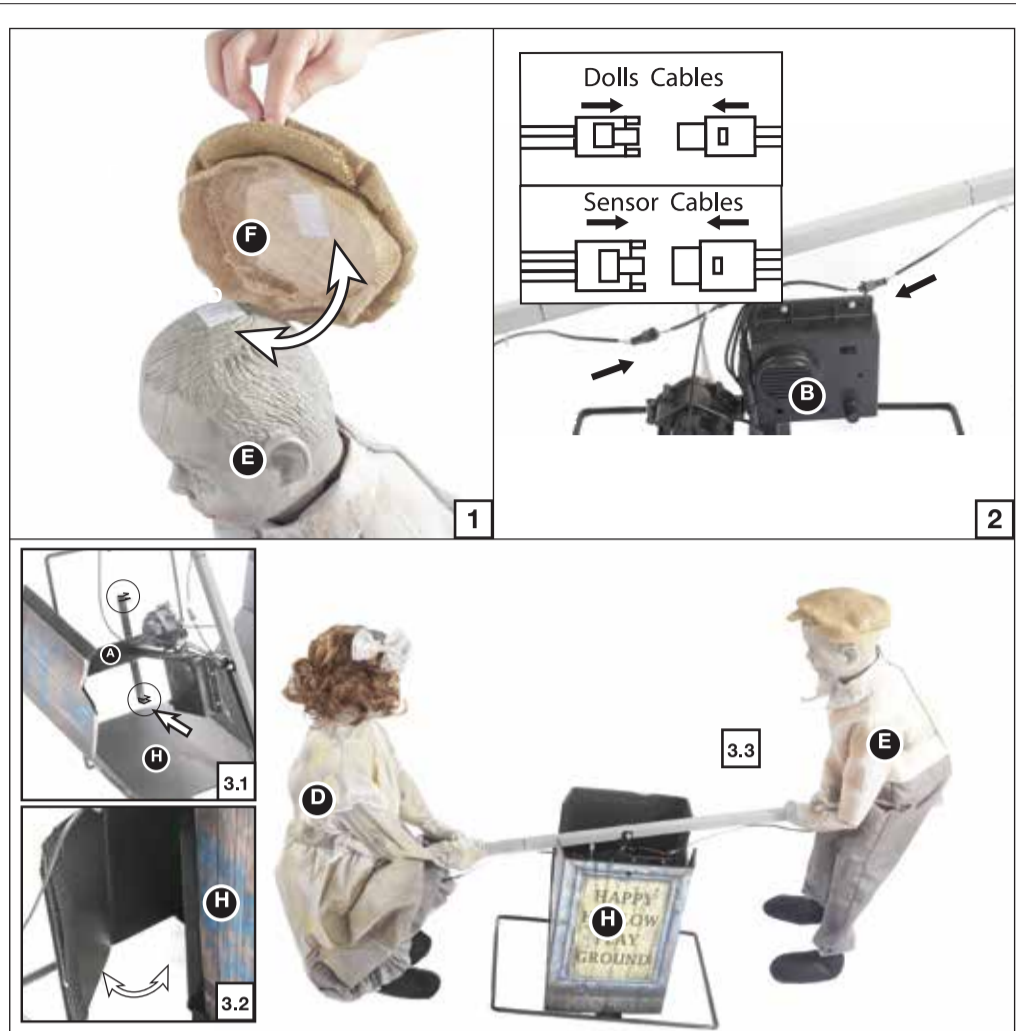
BEFORE ASSEMBLING, REMOVE ALL THE ABOVE PARTS FROM BOX. IF ANY PART IS MISSING, PLEASE CONTACT CUSTOMER SERVICE AT SUPPORT@MORRISCOSTUMES.COM, OR BY PHONE 704-332-3304. IN YOUR EMAIL INQUIRY, PLEASE INCLUDE: YOUR ORDER NUMBER, WHO YOU BOUGHT IT FROM, AND WHAT SPECIFICALLY IS WRONG. THANK YOU.



STEP 1
Secure the (B) Torso Frame to the (A) Base by aligning the quick-connect push buttons into the pre-drilled holes as shown in Figure 1.
Now, plug the Adapter into the input receiving jack marked "DC 5.9V" on the Function Control Box.
Note: Do not plug the Adapter into power outlet until item assembly is completed.
Assemble the (C) Support Poles to the (B) Torso Frame as shown in Figure 2, and secure by aligning the quick-connect push buttons into the pre-drilled holes.



STEP 2
Attach the (D) Girl into the slots located at the end of the (C) Support Poles as shown in Figure 1.
Secure girl's hands with the hook & loop closures as shown in Figure 2.
Attach the (E) Boy into the slots located at the other end of the (C) Support Poles as shown in Figure 3.
Secure boy's hands with the hook & loop closures as shown in Figure 4.



STEP 3

Attach the (F) Hat on the (E) Head and secure with the hook and loop closures as shown in figure 1. Slide the cables the (D) Girl and the (E) Boy through the metal rings under the (C) Support Poles, connect to the coordinated cables on the (B) Torso Frame as shown in Figure 2. Connect the cable from the (G) Sensor to the coordinated cable on the (B) Torso Frame as shown in Figure 2. Wrap the (H) Sign around the (B) Torso Frame, make sure the bottom of each panels slide into the slots located on the (A) Base as shown in Figure 3.1, then Secure the (H) Sign with the hook & loop closures as shown in Figure 3.2.



STEP 4

Attach the (G) Sensor on the (H) Sign using the hook & loop closures as shown in Figure 1. Note: Please make sure the (G) Sensor appeared from outside. Secure the (I) Fabric Cover to the inside of the (H) Sign with the hook & loop closures as shown in Figure 2.

OPERATION INSTRUCTIONS:

1. Plug the power adapter into a standard power outlet and adjust the settings on the Function Control Box, located on the (B) Torso Frame, as desired.

2. Settings:

On: This setting allows the item to run continuously.

Off/Try-Me: This switch mode allows the item to be activated only if triggered by using a Step Here Try Me Activation Pad. The item will operate for one audio cycle with each Try-Me activation. Refer to Assembly Instructions Step 1 for further details.

Sensor: This switch mode will activate lights, sound, and animation when the Infra-red (IR) sensor is activated and will operate for 1 audio-cycle with each activation. The Infra-red (IR) sensor has a range of up to 2 m/6.5 ft. and will activate when someone comes within an 80-degree angle from left-to-right, as well as from above and below.

 : Raise or lower the volume using the volume control turn dial, turn all the way down to turn the volume off.

This device complies with Part 15 of the FCC Rules. Operation is subject to the following two conditions: (1) This device may not cause harmful interference, and (2) this device must accept any interference received, including interference that may cause undesired operation.

CAUTION: Changes or modifications not expressly approved by the party responsible for compliance could void the user's authority to operate the equipment.

NOTE: This equipment has been tested and found to comply with the limits for a Class B digital device, pursuant to Part 15 of the FCC Rules. These limits are designed to provide reasonable protection against harmful interference in a residential installation. This equipment generates, uses and can radiate radio frequency energy and, if not installed and used in accordance with the instructions, may cause harmful interference to radio communications. However, there is no guarantee that interference will not occur in a particular installation. If this equipment does cause harmful interference to radio or television reception, which can be determined by turning the equipment off and on, the user is encouraged to try to correct the interference by one or more of the following measures: Reorient or relocate the receiving antenna, increase the separation between the equipment and receiver, connect the equipment into an outlet on a circuit different from that to which the receiver is connected. Consult the dealer or experienced radio/TV technician for help.

